



**Chimney Rock**  
Enterprises

ElkAHaul

CRE-SxS

# Operation & Maintenance Manual

Serial #: \_\_\_\_\_

Order#: \_\_\_\_\_



Read and understand this manual and all instructions before operating the CRE-SxS Game Cart.

Chimney Rock Enterprises  
108 7th Street  
Glendive, MT 59330  
(406)-941-2455  
ElkAHaul@midrivers.com

## TABLE OF CONTENTS

General Safety Rules . . . . .	3
Setting Up the CRE-SxS Game Cart. . . . .	7
Operating the CRE-SxS Game Cart . . . . .	14
Maintaining the CRE-SxS Game Cart . . . . .	16
Troubleshooting . . . . .	18
Parts Lists, Schematic Diagrams, and Warranty. . . . .	19



### Serial Number and Order Number

A Serial Number is used to identify your machine and is located on the Serial Number Label on your machine. An Order Number is used to check and maintain your order history and is located on the upper left portion of your packing slip. For your convenience and ready reference, enter the Serial Number and Order Number in the space provided on the front cover of this manual.

### Additional Information and Potential Changes


CRE reserves the right to discontinue, change, and improve its products at any time without notice or obligation to the purchaser. The descriptions and specifications contained in this manual were in effect at printing. Equipment described within this manual may be optional. Some illustrations may not be applicable to your machine.

# GENERAL SAFETY RULES


Conventions used in this manual

 **WARNING** This indicates a hazardous situation, which, if not avoided, **COULD** result in death or serious injury.

 **CAUTION** This indicates a hazardous situation, which, if not avoided, **COULD** result in minor injury.

 **NOTICE** This information is important in the proper use of your machine. Failure to follow this instruction could result in damage to your machine or property.

---

 **WARNING**  
Read this Safety & Operating Instructions manual before you use the CRE-SxS Game Cart. Become familiar with the operation and service recommendations to ensure the best performance from your machine. If you have any questions or need assistance, please contact us at [ElkAHaul@midrivers.com](mailto:ElkAHaul@midrivers.com) or call (406)-941-2455 and one of our Technical Support Representatives will be happy to help you.

---

## Labels

Your CRE-SxS Game Cart carries prominent labels as reminders for its proper and safe use. Take a moment to study them and make a note of their location on your Game Cart as you set up and before you operate the unit. Replace damaged or missing safety and information labels immediately.

# GENERAL SAFETY RULES

## Protecting Yourself and Those Around You



This is a high-powered machine with moving parts operating with high energy at high speeds. You must wear proper clothing and safety gear when operating this machine to prevent or minimize the risk of severe injury. Always take the following precautions when operating this machine.

- Always wear protective safety glasses with side shields while using this machine.
- Avoid wearing loose clothing or jewelry, which can catch on moving parts.
- We recommend wearing gloves while using this machine. Be sure gloves fit properly and don't have loose cuffs or drawstrings.
- Wear boots with non-slip treads when using your CRE-SxS Game Cart. If you have safety boots, we recommend wearing them. Do not use machine while barefoot or wearing open sandals with exposed toes or heels.
- Wear long pants while operating the machine.

## Safety for Children and Pets



Tragic accidents can occur if the operator is not alert to the presence of children and pets. Children are often attracted to the machine and moving activity. NEVER assume that children will remain where you last saw them. Always follow these precautions.

- Keep children and pets at least 100 feet from machine and ensure they are under watchful care of a responsible adult.
- Be alert and turn machine off if children or pets enter the machine area.
- Before and while moving backwards, look behind and down for small children.
- Never allow children to operate the machine.
- Use extra care when approaching blind corners, shrubs, trees, and other objects that may obscure your vision.

## Slope Operation



Slopes are a major factor related to slip and fall accidents, which can result in severe injury. All slopes require caution. If you feel uneasy on a slope, do not go on it. Always take the following precautions when using this machine on slopes.

### **ALWAYS:**

- Always use extreme caution when going across or up and down slopes.
- Always remove objects such as rocks, tree limbs, etc. when crossing.
- Always watch for holes, ruts, or bumps. Tall grass can hide obstacles.

### **NEVER**

- Never go near drop-offs, ditches, or embankments. You could lose your footing or balance.
- Never go on slopes greater than 20 degrees or excessively steep slopes.
- Never go on wet slopes. Reduced traction could result in slipping.
- Never go in water that will submerge the motor, electronics, or batteries.

# GENERAL SAFETY RULES

## General Safety



Operating this machine safely is necessary to prevent or minimize the risk of death or serious injury. Unsafe operation can create a number of hazards for you. Always take the following precautions when operating this machine.

- Never allow people who are unfamiliar with these instructions to use the CRE-SxS Game Cart.
- Keep bystanders at least 100 feet away from your area of moving this machine at ALL times. The cart can throw objects far and at great speeds. To be safe DO NOT operate this machine near children or pets, and NEVER allow children to operate this machine.
- Disengage the shift lever and STOP the machine when another person or pet approaches.
- Keep your hands and feet away from all moving parts such as wheels, sprockets, gears, etc. Never reach under the machine or grab hold of any part under the machine when the machine is running.
- Your CRE-SxS Game Cart is a powerful tool and not a play thing. Exercise extreme caution at all times. The design of this machine is to move game and NOT for any other purpose.
- To quickly stop the machine in an emergency, remove your hand from the accelerator and engage brake.
- Always shut off the machine whenever you leave the machine. Allow motor to cool 5 minutes and always use precaution when adjusting or working on the machine.
- When operating over uneven terrain and slopes, use extreme caution to ensure solid and firm footing. Keep a firm hold on the handlebars and walk. NEVER run.
- Use extra caution when crossing wet or slippery conditions.
- Always operate the machine from behind and use extra caution when operating machine.
- DO NOT, under any conditions, remove, bend, cut, fit, weld, or otherwise alter standard parts on the CRE-SxS Game Cart. This includes all shields and guards. Modifications to your machine could cause personal injuries and property damage and VOID your Warranty.
- If the machine starts to make an unusual noise or vibration, immediately shut off the motor and wait 5 minutes to cool. Vibration is generally a warning of trouble. Inspect for clogging or damage. Clean and repair and/or replace damaged parts.

# GENERAL SAFETY RULES

## WARNING

- While using the CRE-SxS Game Cart, don't hurry or take things for granted. When in doubt about the equipment or your surroundings, STOP the machine and take the time to look things over. Make sure you have complete control of the machine at all times.
- Do not operate the machine when under the influence of drugs, alcohol, or medication.
- Use the machine only in daylight.

## WARNING

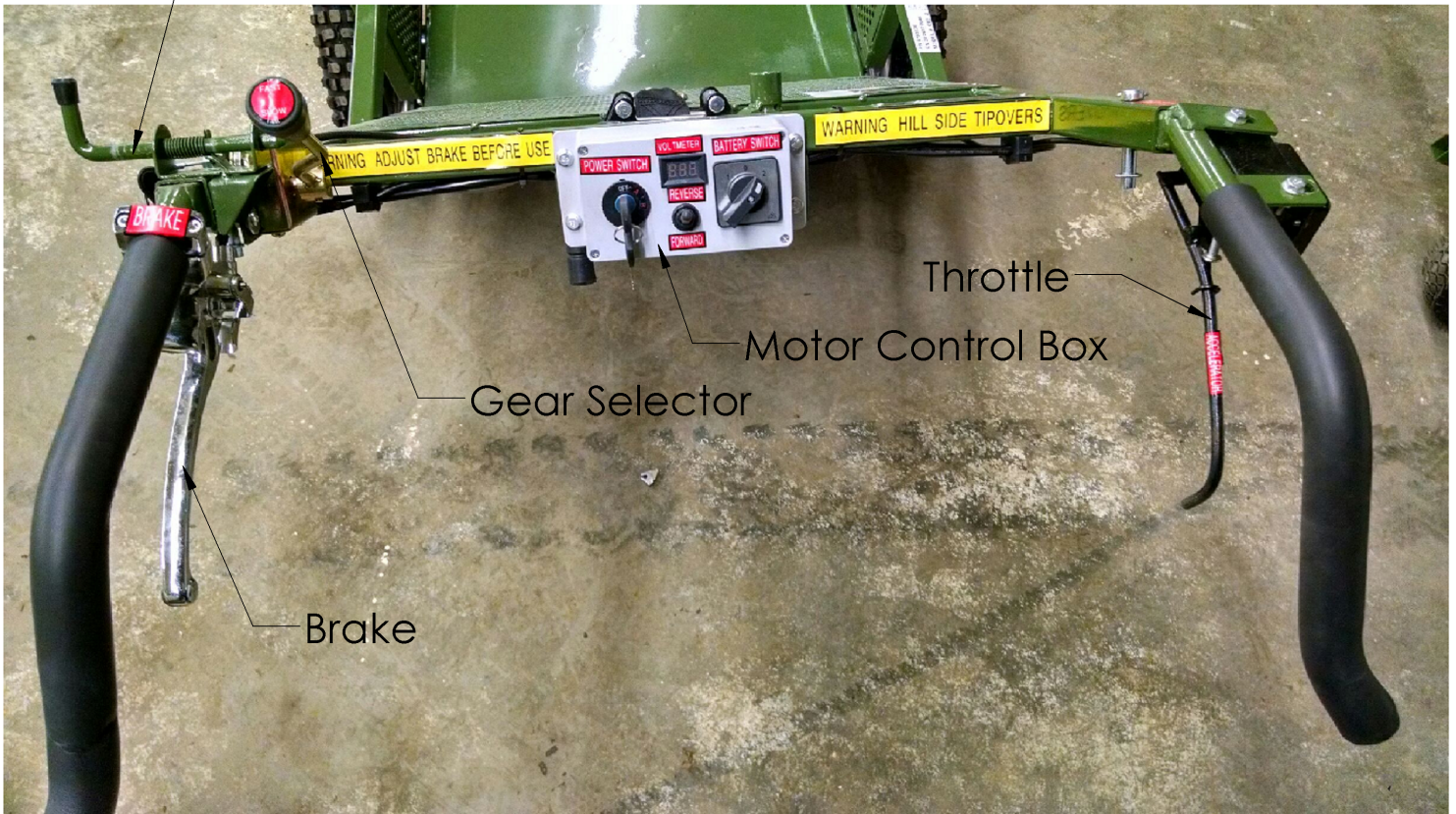
The machine must be operated safely to prevent or minimize the risk of minor or moderate injury. Unsafe operation can create a number of hazards for you. Always take the following precautions when operating this machine.

- Keep in mind that the operator or user is responsible for accidents or hazards occurring to other people, their property, and themselves.
- Use caution when moving close to obstructions to avoid hitting the handlebar. Ignoring this safety precaution could injure your hand or lose control of the machine.
- Keep all fasteners tight, and keep the equipment and attachments in good operating condition.

# SETTING UP THE CRE-SxS GAME CART

It may be helpful to familiarize yourself with the controls and features of the CRE-SxS Game Cart as shown in Figure 1 before beginning these procedures. If you have any questions, please feel free to contact us at [ElkAHaul@midrivers.com](mailto:ElkAHaul@midrivers.com).

## CRE-SxS Game Cart Controls and Features



# SETTING UP THE CRE-SxS GAME CART

## NOTICE

Do not discard the crate and packaging until you are fully satisfied with your new CRE-SxS Game Cart.

### Unpacking the Machine

Note: Unpacking the CRE-SxS is a two person job. We recommend you have an extra set of hands available before you begin.

Tools and Supplies needed:

- Gloves
- Phillips and Flathead Screwdriver
- Pliers
- Hammer
- 10mm wrench
- 14mm wrench
- 19mm wrench

## CAUTION

Wear gloves and be mindful of the sharp metal tabs when removing the crate lid.

1. Remove the lid using a hammer and flathead screwdriver.
2. Remove small parts from crate so that only the 2 piece frame is remaining.
3. Carefully lay the crate on its side.

## NOTICE

4. Slide 2 piece frame out of crate. Watch carefully to avoid catching cables and handles on crate.
5. Cut zip ties holding frame together. Carefully unfold frame. Don't damage cables or wires while doing so.

Unpacked Crate Items



Unfolded Frame

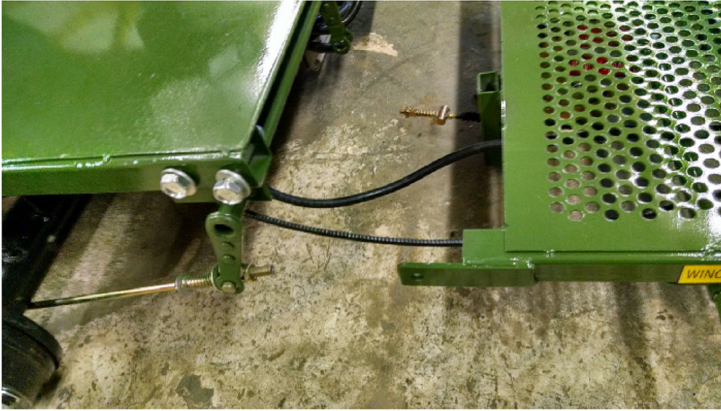




# SETTING UP THE CRE-SxS GAME CART

6. Bolt frame together using 17mm wrench.

Frame Unbolted



Frame Attached



7. Attach fenders to frame using 17mm wrench.

Fenders Unbolted



Fenders Attached



8. Remove 19mm lug nuts and washers from wheel hub.

9. Attach wheels with stem facing outwards.

10. Slowly and carefully tip the cart back onto its handlebars. Attach front wheel mounting assembly as shown below.



**CAUTION**

Check the tire pressures.

The maximum tire pressure is marked on the side of each tire. DO NOT exceed the manufacturer's recommended maximum pressure.

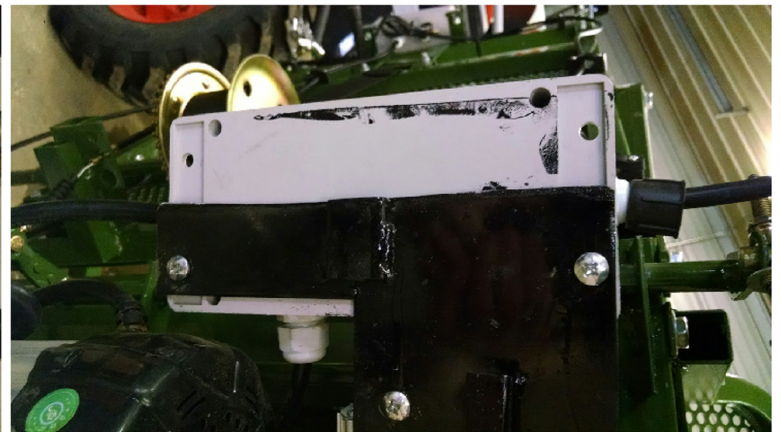
# SETTING UP THE CRE-SxS GAME CART

11. Carefully tilt cart over onto its left side. Use padding to protect frame from scratches.
12. Remove (4) phillips screws and 10mm nuts from skid plate and computer control box holder.
13. Attach metal control box first loosely then tighten nuts down.
14. Attach extended skid plate with four screws and 10mm nuts at the same time as the plastic control box.

## NOTICE

15. Carefully use pliers to bend black control box mounting plate up as far as possible without damaging plastic control box. Then attach box and skid plate.

Control Box and Skid Plate Unbent



Control Box and Skid Plate After Bending

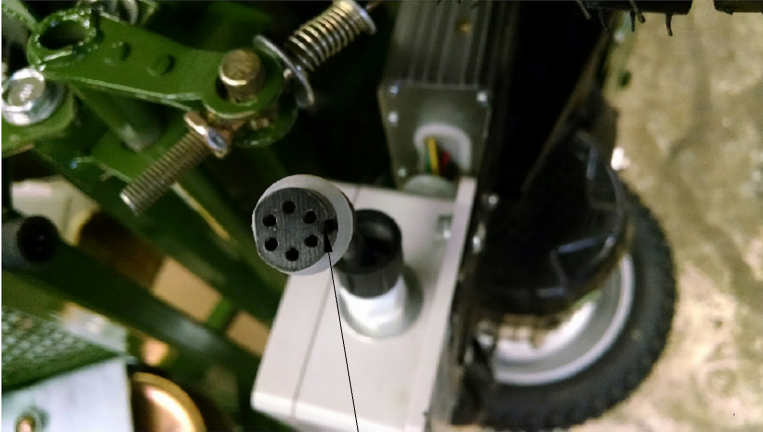


# SETTING UP THE CRE-SxS GAME CART

## ⚠ NOTICE

16. Carefully attach wires by lining up the notches. Make sure to align the pins or damage will be done to your game cart. Then tighten sleeve nut hand tight.

Align the Notches



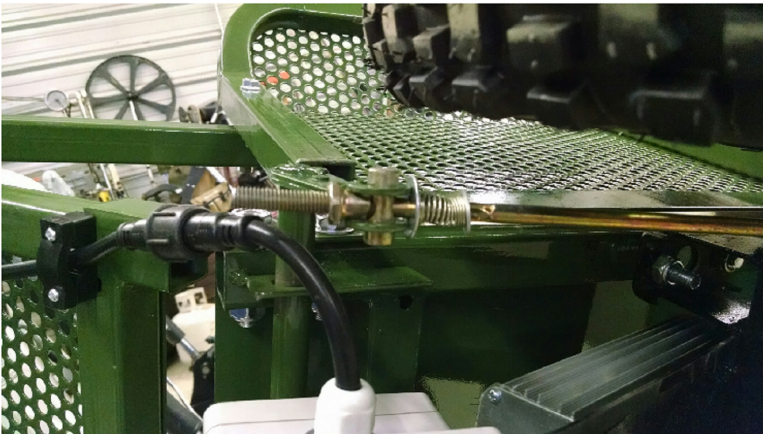
Notch

Tighten Sleeve Nut



Sleeve Nut

17. Assemble main brake cable as shown below. Tighten individual brake rod assemblies using 14mm wrench until about an inch of threads is past the nut.
18. Carefully set the cart back onto its wheels.



## Brake Adjustment

While standing behind the cart, apply brake and push cart forward.

If either of the wheels move, tighten brake rod assemblies as shown in [Step 17](#) until wheels don't move with brake engaged.

Tightening the nut (clockwise) will increase the pressure. Loosening the nut (counter-clockwise) will decrease the pressure on the brake pad.

## ⚠ WARNING

Do not proceed until the brakes are properly adjusted. You may be injured or your CRE-SxS may be damaged if great care is not taken.

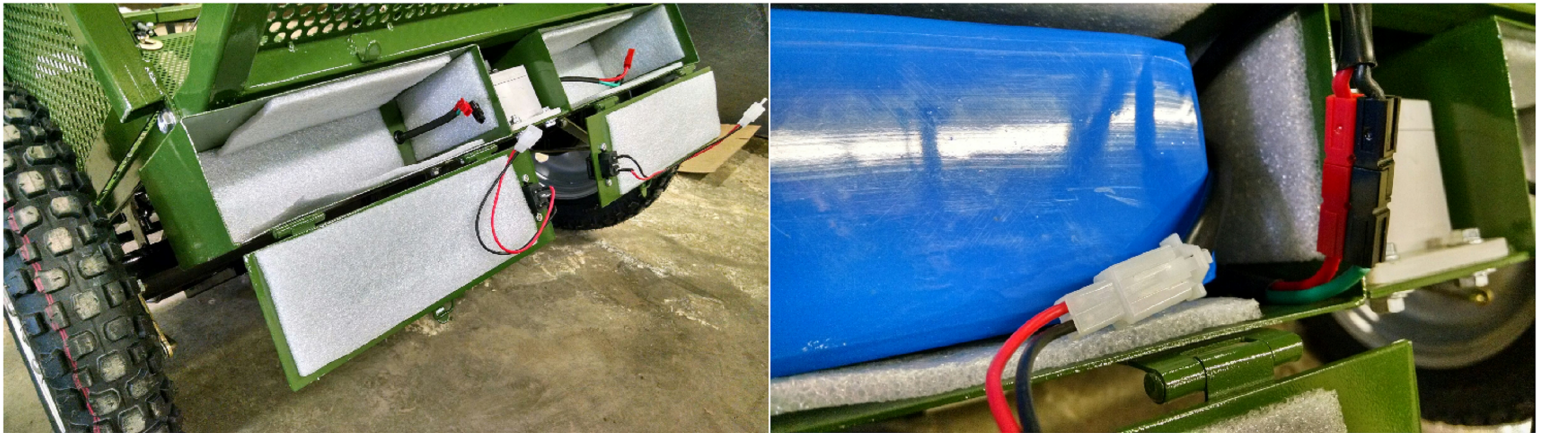
# SETTING UP THE CRE-SxS GAME CART

## Battery Installation



Before proceeding, make certain that the Power Switch is turned to the OFF position and the Battery Switch is centered on 0.

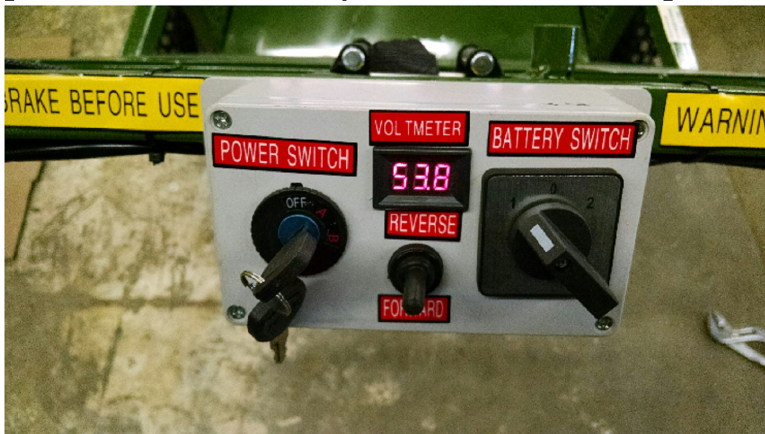
1. Carefully and gently tilt cart back onto its handles.
2. Open battery box and insert battery as shown below. Extra battery is available for purchase to increase run time.
3. Connect wires making sure that the grooves line up with the correct colored wire.
4. While being very careful to avoid pinching wires, close the lid and latch in place once wires are connected properly.
5. Carefully set the cart back down onto its wheels.



## Testing Battery Charge

To test the battery charge, turn Power Switch to A or B position and Battery Switch to 1 or 2 depending on which side the battery is installed on. Battery voltage on the Voltmeter should appear. If voltage does not appear, refer back to step 3 and check battery connections.

Once voltage is present on the Voltmeter, check to see if battery needs charging. If voltage is below 54 volts, battery may need charging. Turn Power Switch to OFF position and Battery Switch to 0. Use provided Battery Charger when needed.



# SETTING UP THE CRE-SxS GAME CART

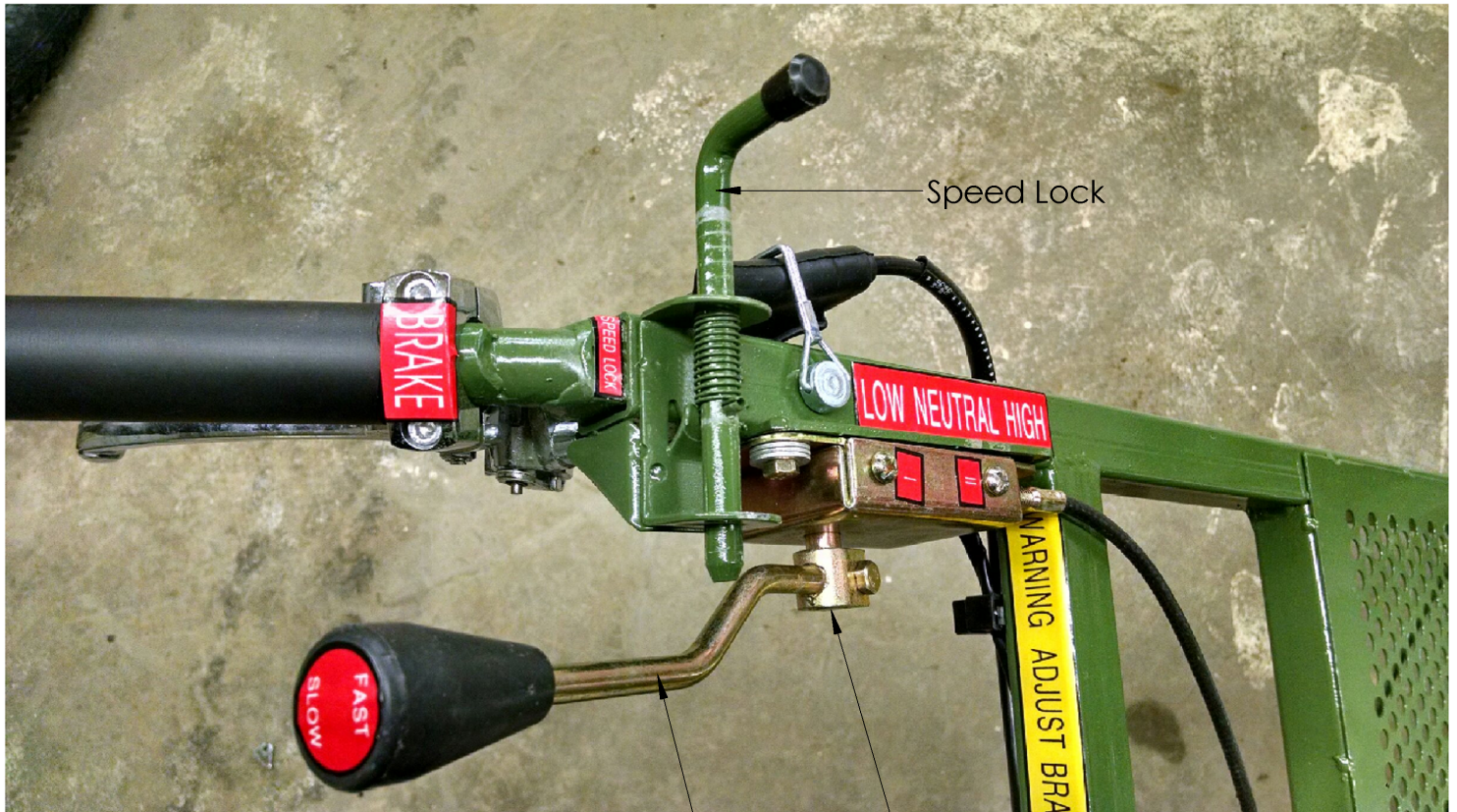
## Neutral Position Adjustment

1. Put Gear Selecting Lever forward into High.
2. Engage Speed Lock.
3. Pull Gear Selecting Lever back against Speed Lock. This engages Neutral. If Lever does not stay back against the Speed Lock on its own, Neutral Position must be adjusted.
4. To adjust Neutral Position, first remove 10mm bolt holding the Gear Selecting Lever in place. Carefully remove Gear Selecting Lever while taking note of its current position on the splined shaft. Rotate the Lever clockwise or counter clockwise by one spline or notch at a time. Then reattach Lever and install 10mm bolt holding the Lever in place. Return to step 3 until Gear Selecting Lever stays against the Speed Lock on its own. Continue to step 5 once this is achieved.
5. Turn Power Switch to A or B position and Battery Switch to 1 or 2 depending on which side the battery is installed on and switch to Forward.
6. Hold the Brake.

### CAUTION

7. **VERY SLOWLY** engage the throttle. If machine tries to move, **TURN THE MACHINE OFF**. Neutral must be adjusted. Go back to step 4.

Continue adjusting the Neutral Position until you hear the motor working without the machine moving in the Neutral Position.



Speed Lock  
Splined Shaft  
Gear Selecting Lever

# OPERATING THE CRE-SxS GAME CART

This section covers the starting and stopping of your CRE-SxS Game Cart and discusses the basic operating features. You may find it helpful to review the CRE-SxS Game Cart Controls and Features on page 7 before reading this section.

## Pre-Start Safety Check

Normal wear and tear can bring about the need for adjustment to some running parts to ensure they function properly in terms of safe operation.

## Testing the Controls:

1. Stand in the Operating Position behind the handlebars. Turn the Power Switch to A or B position and Battery Switch to 1 or 2 depending on which side the battery is installed on and switch the machine into Forward.
2. Pull gear selecting handle back into Low gear.
3. Engage the braking system to see if machine slows or stops while VERY SLOWLY engaging the throttle.
4. Disengage the throttle and switch into reverse. Again, check the braking system.
5. Machine should be stopped. If the machine does not respond, your machine may need adjustment or be disabled or damaged.

---

### WARNING

If your machine does not respond, turn it off by using the ignition key and STOP using your machine IMMEDIATELY!

---

Inspect the system for the following:

1. Make sure the brakes operate correctly. Refer to page 11.
2. Make sure the battery is connected properly. Refer to page 12.

---

### CAUTION

If your machine "creeps" during these tests with the brake engaged, the brake cable needs adjustment. Consult page 11 of this manual and make all necessary corrections.

---

## Running the CRE-SxS

1. Turn your machine ON following instructions above.
2. Check the battery power Voltmeter on the systems gauge.
3. Switch to Forward.
4. Put the Gear Selecting Lever in the Neutral Position and engage the Brake.
5. Carefully move Lever to the Low position and slowly release the hand brake.

---

### CAUTION

Always have one hand on the braking lever during ALL OPERATIONS!

6. VERY SLOWLY engage the throttle to start the machine forward.
7. Always maintain control of the amount of throttle you use to move the machine and Always have control of the braking system.

---

## Stopping the machine

1. Remove pressure from the throttle and come to a complete stop.
2. Engage the Speed Lock and pull Gear Selecting Lever to the Neutral Position.
3. Engage the Hand Brake and fasten brake lock in the Locking Position.
4. Turn key to the OFF Position.

# OPERATING THE CRE-SxS GAME CART

## Stopping the machine

1. Remove pressure from the throttle and come to a complete stop.
  2. Engage the Speed Lock and pull Gear Selecting Lever to the Neutral Position.
  3. Engage the Hand Brake and fasten brake lock in the Locking Position.
  4. Turn key to the OFF Position.
- 

## WARNING

When operating the CRE-SxS Game Cart over uneven terrain or slopes, use Extreme Caution not to tip over the machine.

DO NOT use the CRE-SxS Game Cart on slopes greater than 20 degrees. Doing so could cause injury or damage to your machine.

---

## WARNING

If you need to leave the operating position to clear debris from the path, first put the machine in Neutral. Turn the motor off and set the hand brake.

Do not touch the motor. It can be very hot.

---

## Operation on Up Hill Slopes:

1. When maneuvering on woody, rocky, etc. areas, allow the machine to ride up and over material slowly. Adjust your forward speed to varying conditions.
2. While moving up steep grades, the weight of the material in the cart may shift back and down. Keep a firm grip on the handles and Always control the cart with the Hand Brake.

## Operation on Downward Slopes:

1. While maneuvering on woody, rocky, etc. areas, allow the machine to slowly ride over material with complete control of weight and speed. Never allow speed to determine your safety.
2. Weight in cart may shift forward and down. Allow weight to rest on front wheel and control speed with Hand Brake.

## Operation on Side Slopes:

1. When using your machine on side hills or slopes, never use on slopes or hills over 20 degrees. If you have weight on your machine, use Extreme Caution. Avoid areas where slippery or wet. Use lower, slower speeds when in these conditions.
- 

## WARNING

Always be careful of your footing when in wet or slippery conditions.

---

## Operation in Cold Weather:

At temperatures below 30°F and a high dew point, your CRE-SxS Game Cart may experience icing to the wheels, cables, levers, and brakes. Use Extreme Caution under these conditions.

# MAINTAINING THE CRE-SxS GAME CART

Regular maintenance is the way to ensure the best performance and long life for your machine. Please refer to this manual for maintenance procedures. Service intervals listed in the checklist below will help ensure your machine a long lasting life.

## WARNING

Some of the following procedures require access to the underside of the machine. If you need to tip the machine back or on its side, you must first disconnect the battery wire from the battery.

## WARNING

Before doing any maintenance procedure or inspection, STOP the motor and let it cool down for 5 minutes.

### Regular Maintenance Checklist

<u>Procedures</u>	<u>Before Each Use</u>	<u>Every 25 Hours</u>	<u>Every 100 Hours</u>
Check Operators Switch			
Check General Condition			
Lubricate Grease Fittings			
Lubricate Brake Cables			
Check Tire Pressure			
Check Parking Brake Adjustment			
Check Battery Charge			
Check Cable Connections			

### Battery Care

Proper care can extend the life of the battery. Follow these recommendations to ensure your battery's best performance and long life.

- Do not allow the battery charge to get too low. If the machine is not used, charge the battery every 4 to 6 weeks.
- Store the battery in a dry area that does not freeze.
- Do not charge an already charged battery. In theory, you cannot over charge our battery with a trickle. However, the charger generates heat that could be harmful to the battery if fully charged. A fully charged battery will read 53V-54V with a voltmeter.



# MAINTAINING THE CRE-SxS GAME CART

## Disposing of the Battery Responsibly

Recycle or dispose the battery in an environmentally sound way.

- Do not dispose of a battery in a fire. The battery may explode or leak.
- Do not dispose of a battery in your household trash. Law in most areas prohibits incinerating or disposing in a landfill.

## Charging the Battery

If the battery loses its charge, you will need to use the supplied charger to recharge it.

To connect the battery charger to your CRE-SxS Game Cart follow these steps below.

1. Plug the supplied charger into your CRE-SxS Game Cart.
2. Plug the battery charger into an outlet.



When you are finished charging the battery, disconnect the charger from the outlet first. Then disconnect the battery charger wire from the battery. If you leave the battery charger connected to the battery, the battery will discharge itself back into the charger.



## Recycling a Used Battery

Please dispose of used batteries in a responsible way according to your local hazardous materials regulations. Never throw away used batteries into your household trash.



Charging Ports

Supplied Battery Charger

# TROUBLESHOOTING

Most problems are easy to find. Consult the troubleshooting table below for common problems and their solutions. If you continue to experience problems, contact us at [ElkAHaul@midrivers.com](mailto:ElkAHaul@midrivers.com) or call (406)-941-2455 for support.

## Troubleshooting Table

Symptom	Possible Cause

# PARTS LIST, SCHEMATIC DIAGRAMS, AND WARRANTY

## REPLACEMENT PARTS

REF#	PART#	DESCRIPTION
1		48 V800 Electric Motor
2		Gear Box & Differential
3		Rear Axle
4		Controller
5		Speed Lever
6		Brake Component
7		3.75-12 Rear Tire
8		Gear Box Cable
9		Brakeline
10		Rim
11		Winch
12		Main Electronic Cable
13		Switch
14		Switch Box
15		Dual Battery Switch
16		Dual Battery Switch Box
17		Controller Box
18		Cable Box For Battery Cables
19		Digital Voltage Display
20		Brake Lever Components
21		Hand Brake
22		4.10-4 Front Tire
23		Pin For Front Wheel
24		R Type Clip
25		D Type Clip & Pin

# PARTS LIST, SCHEMATIC DIAGRAMS, AND WARRANTY

## Warranty

### Manufacturing Warranty Coverage

### Owners Warranty and Responsibilities

As a CRE-SxS Game Cart owner, you are responsible for the performance of the required maintenance listed in your owners manual. Chimney Rock Enterprises, Inc. recommends that you retain all receipts covering maintenance on your CRE-SxS Game Cart, but Chimney Rock Enterprises, Inc. cannot deny warranty due to the lack of receipts.

As the CRE-SxS Game Cart owner, you should be aware that Chimney Rock Enterprises, Inc. may deny your warranty if your CRE-SxS Game Cart or part has failed due to abuse, neglect, or improper maintenance or unapproved modifications.

You are responsible for presenting your CRE-SxS Game Cart to Chimney Rock Enterprises, Inc. distribution center or service center as soon as the problem exists. The warranty repairs should be completed in a reasonable amount of time. If you have a question regarding your warranty coverage, feel free to contact Chimney Rock Enterprises, Inc. Technical Service Department by dialing (406)-941-2455.

### Warranty Parts

- 1.
- 2.
- 3.
- 4.
- 5.

End of Season Storage: